



REACH'EM

REACH'EM

REACH'EM is a lightweight, durable, and easy-to-use adapter that allows the Sani-Stick to reach difficult access areas. It attaches to a standard telescopic pole and ensures stable and secure handling during sampling. By eliminating the need for ladders or platforms, REACH'EM reduces risks for operators while extending sampling reach in industrial and laboratory environments.

Reach the unreachable with REACH'EM.

Features and benefits

- Recyclable
- Quick and intuitive installation
- Maintains sponge sterility
- Secure Sani-Stick hold
- Available ready-to-use or as an STL file
- Compatible with ACME-threaded poles



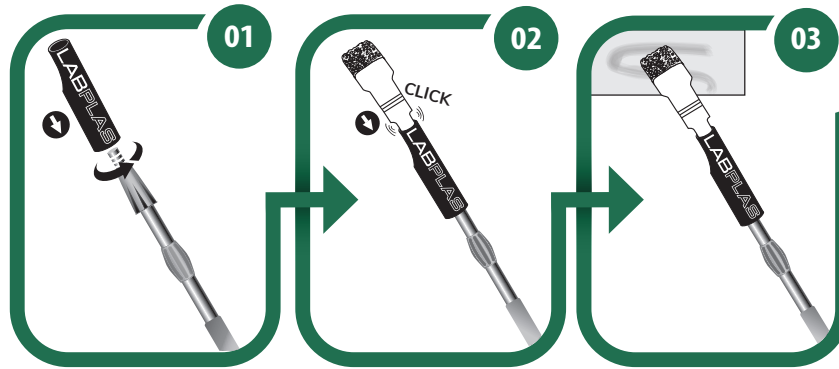
Inspired by your challenges

LABPLAS

VISIT [LABPLAS.COM](https://www.labplas.com) FOR ADDITIONAL INFORMATION ABOUT OUR PRODUCTS | Tel: 1.450.649.7343



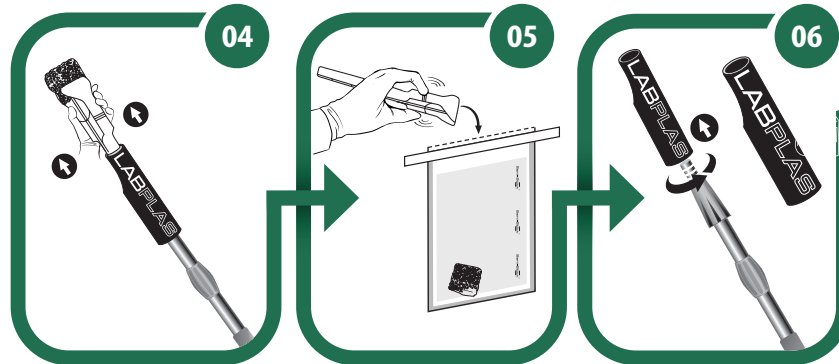
REACH'EM USER GUIDE



01
Screw the Reach'em onto a standard telescopic pole

02
Insert the Sani-Stick into the Reach'em until it clicks

03
Perform surface sampling according to your usual procedures



04
Remove the Sani-Stick by pulling it by the handle guard, without touching the sponge

05
Release the sponge into the sterile bag using the Sani-Stick clamp

06
Unscrew and clean the Reach'em according to current disinfection protocols



Inspired by your challenges

LABPLAS

VISIT LABPLAS.COM FOR ADDITIONAL INFORMATION ABOUT OUR PRODUCTS | Tel: 1.450.649.7343

